

MONTHLY MEMBERSHIP PROGRESS REPORT

LOCATION PAKISTAN

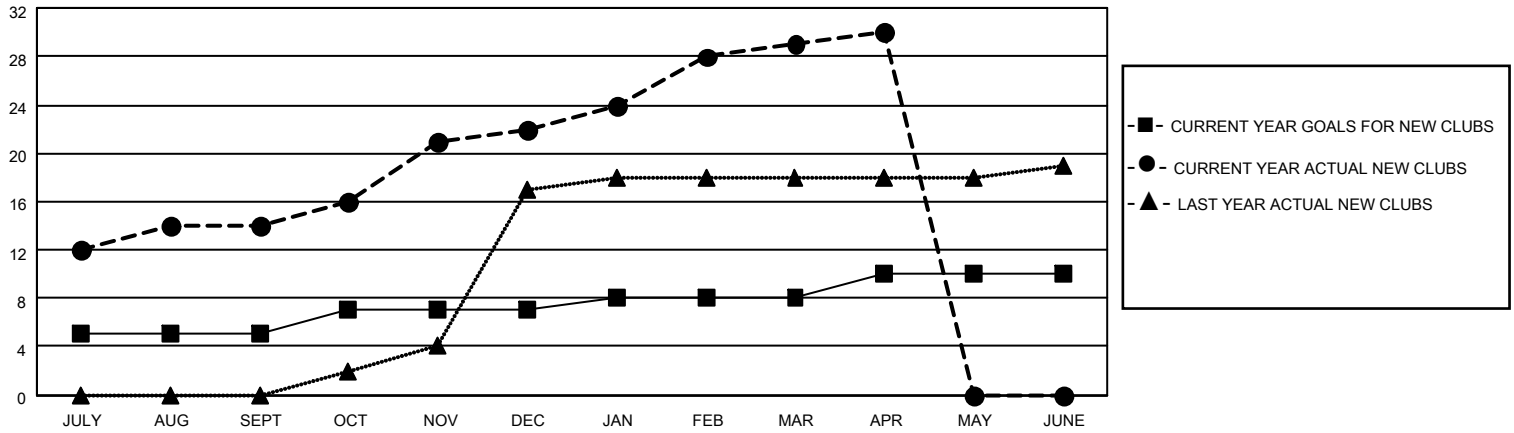
District 305 N1

Results as of: 4/30/2022

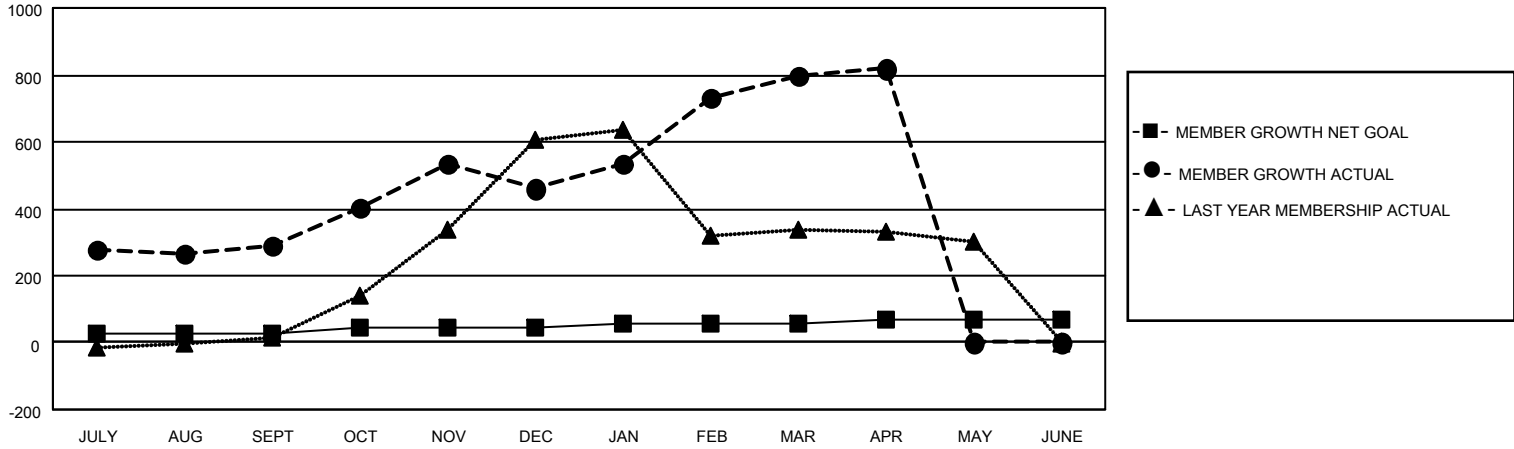
Clubs			
RESULTS FOR 2021-2022			
QUARTER	NEW CLUB GOAL	NEW CLUBS	DROPPED CLUBS
JULY/AUG/SEPT	5	14	5
OCT/NOV/DEC	2	8	4
JAN/FEB/MAR	1	7	1
APR/MAY/JUNE	2	1	0

Members			
RESULTS FOR 2021-2022			
QUARTER	MEMBER GROWTH NET GOAL	MEMBER GROWTH ACTUAL	DROPPED MEMBERS ACTUAL (including transfers)
JULY/AUG/SEPT	25	398	94
OCT/NOV/DEC	20	380	198
JAN/FEB/MAR	10	452	60
APR/MAY/JUNE	15	50	28

GOALS AND ACTUAL NEW CLUBS CUMULATIVE



GOALS AND ACTUAL MEMBERS CUMULATIVE



DROPPED CLUBS: 10

DROPPED MEMBERS

DECEASED	5
CLUB CANCELLED	135
OTHER	240
TOTAL	380

96 CLUBS OF 149 ADDED 1 OR MORE NEW MEMBERS

[CLICK HERE FOR CUMULATIVE MEMBERSHIP DATA](#)

GENDER DISTRIBUTION

MALE	2,928 (78.60%)
FEMALE	797 (21.40%)
NON BINARY	0 (0.00%)
PREFER NOT TO ANSWER	0 (0.00%)

TOTAL FAMILY UNIT MEMBERS 2,863

FAMILY MEMBERS PAYING HALF DUES 2,149